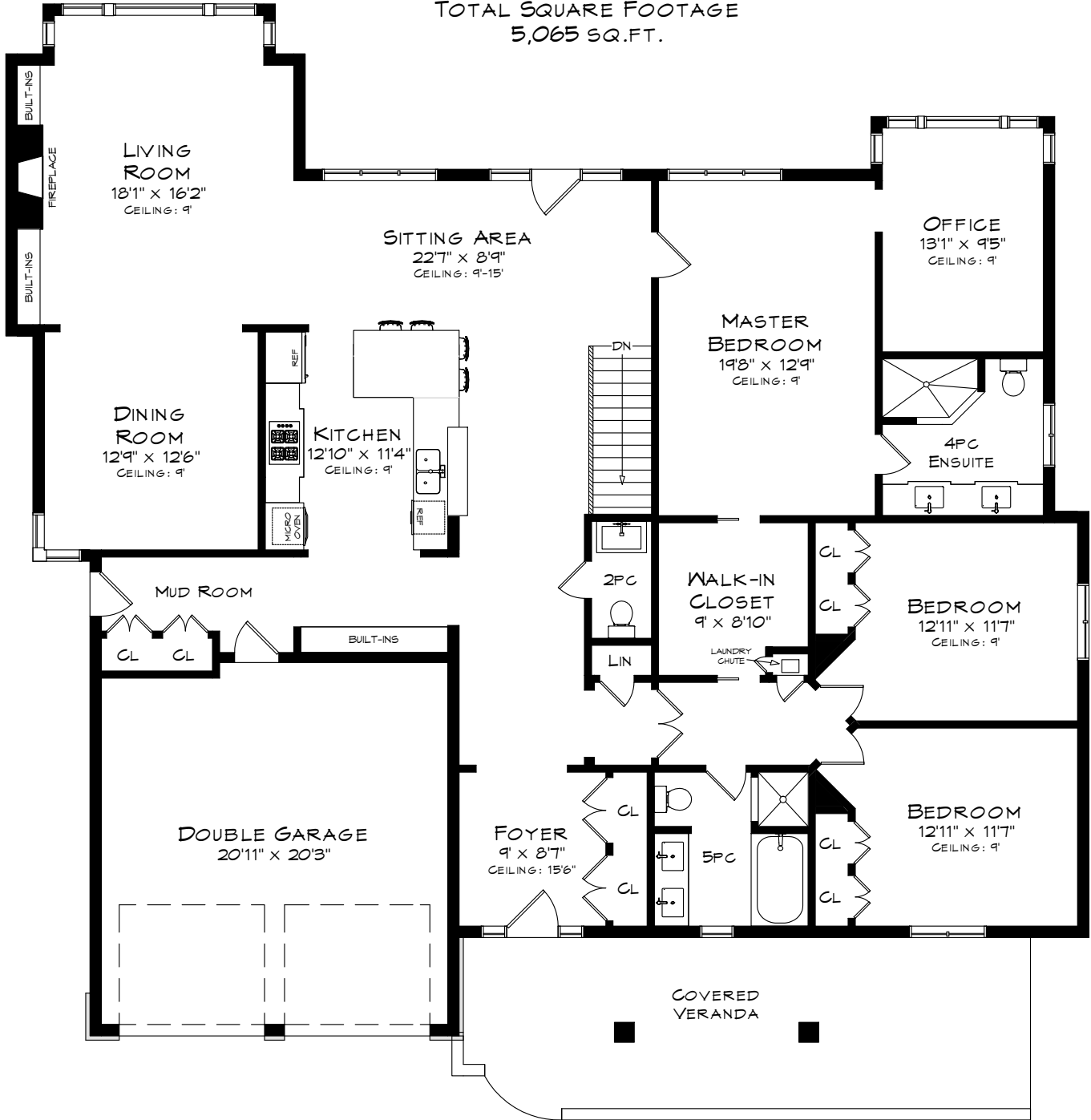
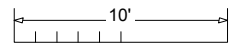


411 DONNYBROOK ROAD

TOTAL SQUARE FOOTAGE
5,065 SQ.FT.

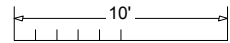
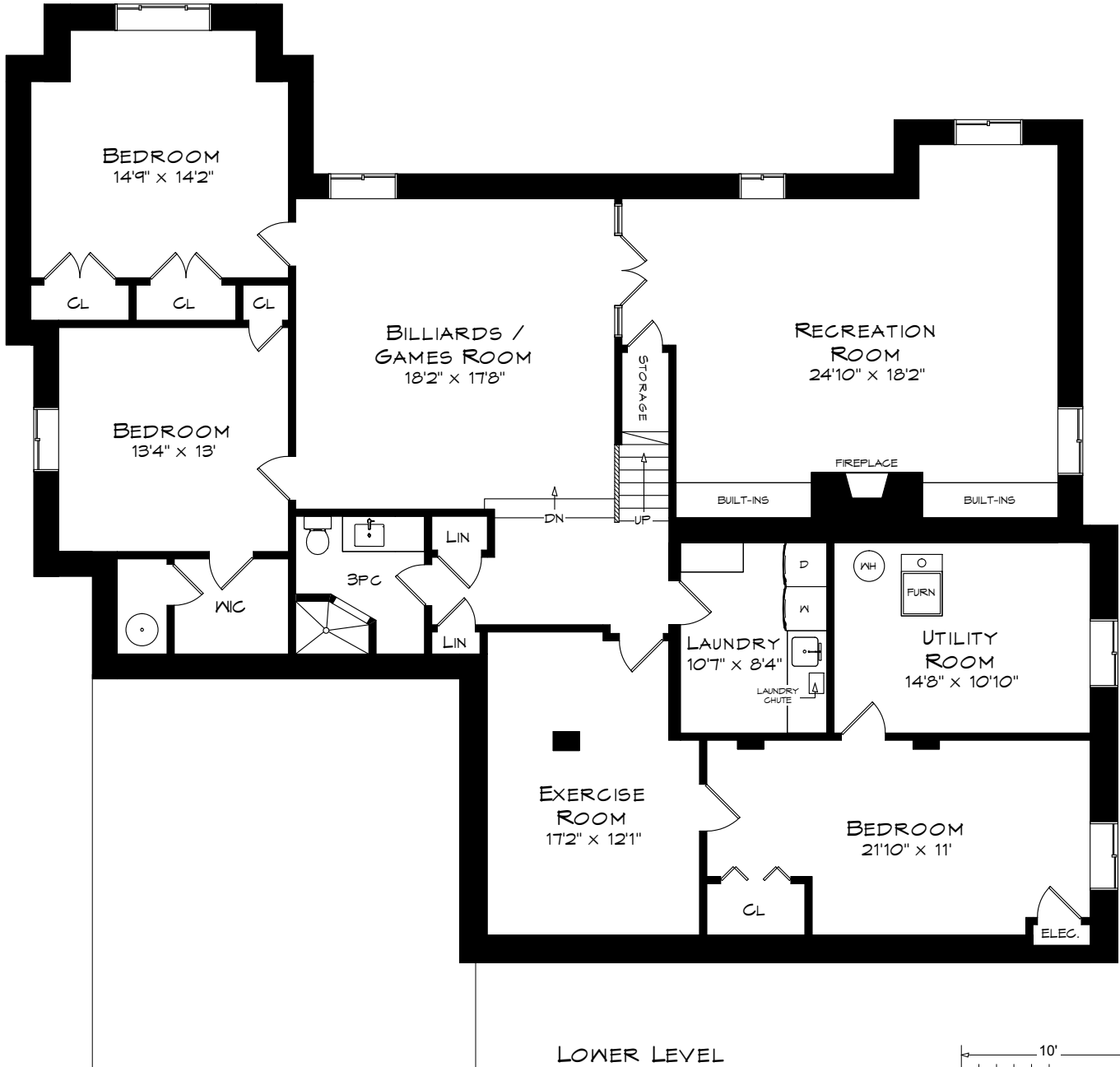


MAIN LEVEL
2,535 SQUARE FEET
+ 465 SF (GARAGE)



Measurements may not be 100% accurate
and should be used as a guideline only.
September - 2020

411 DONNYBROOK ROAD



Measurements may not be 100% accurate
and should be used as a guideline only.
September - 2020