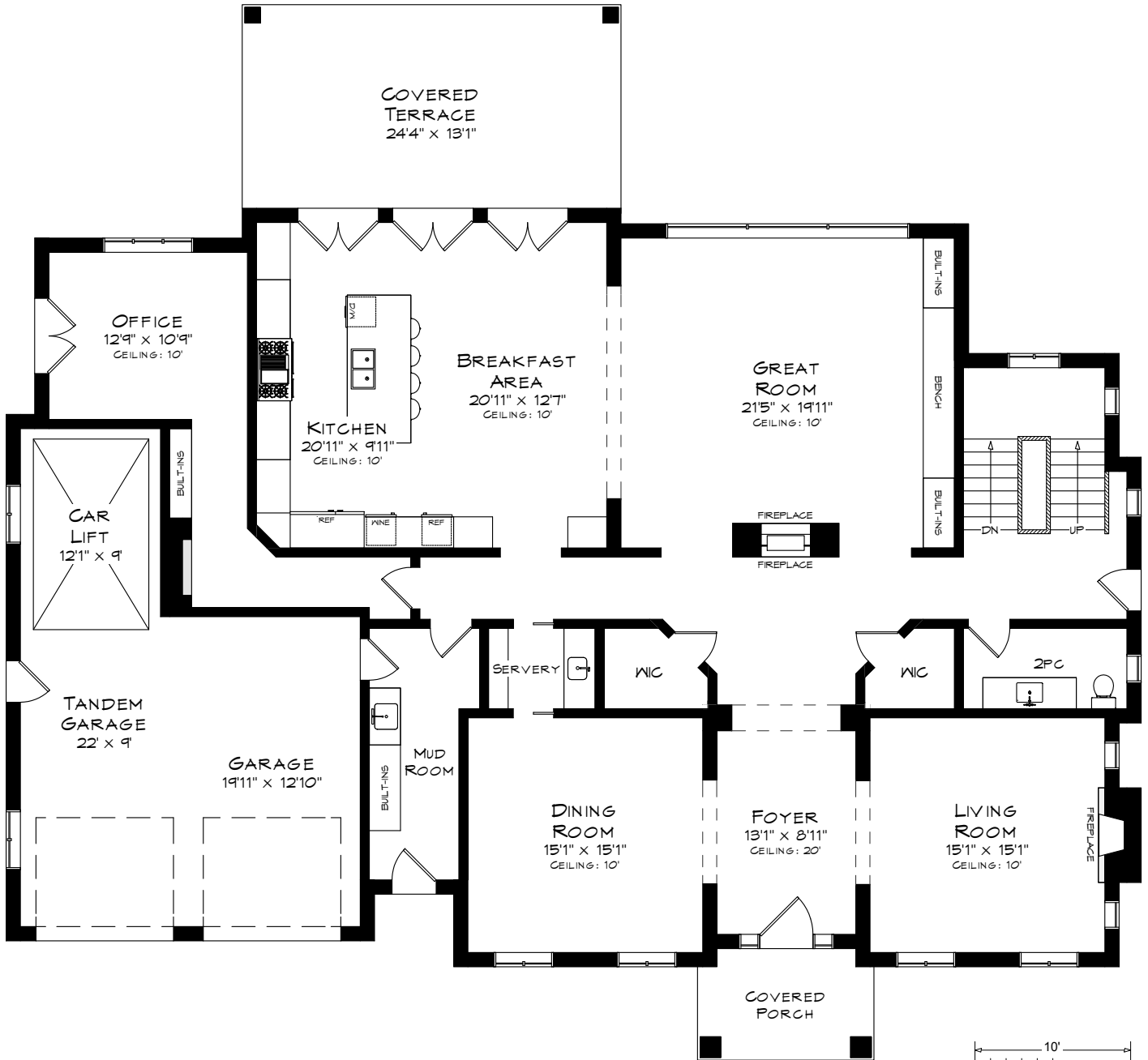


1507 BROADMOOR AVENUE

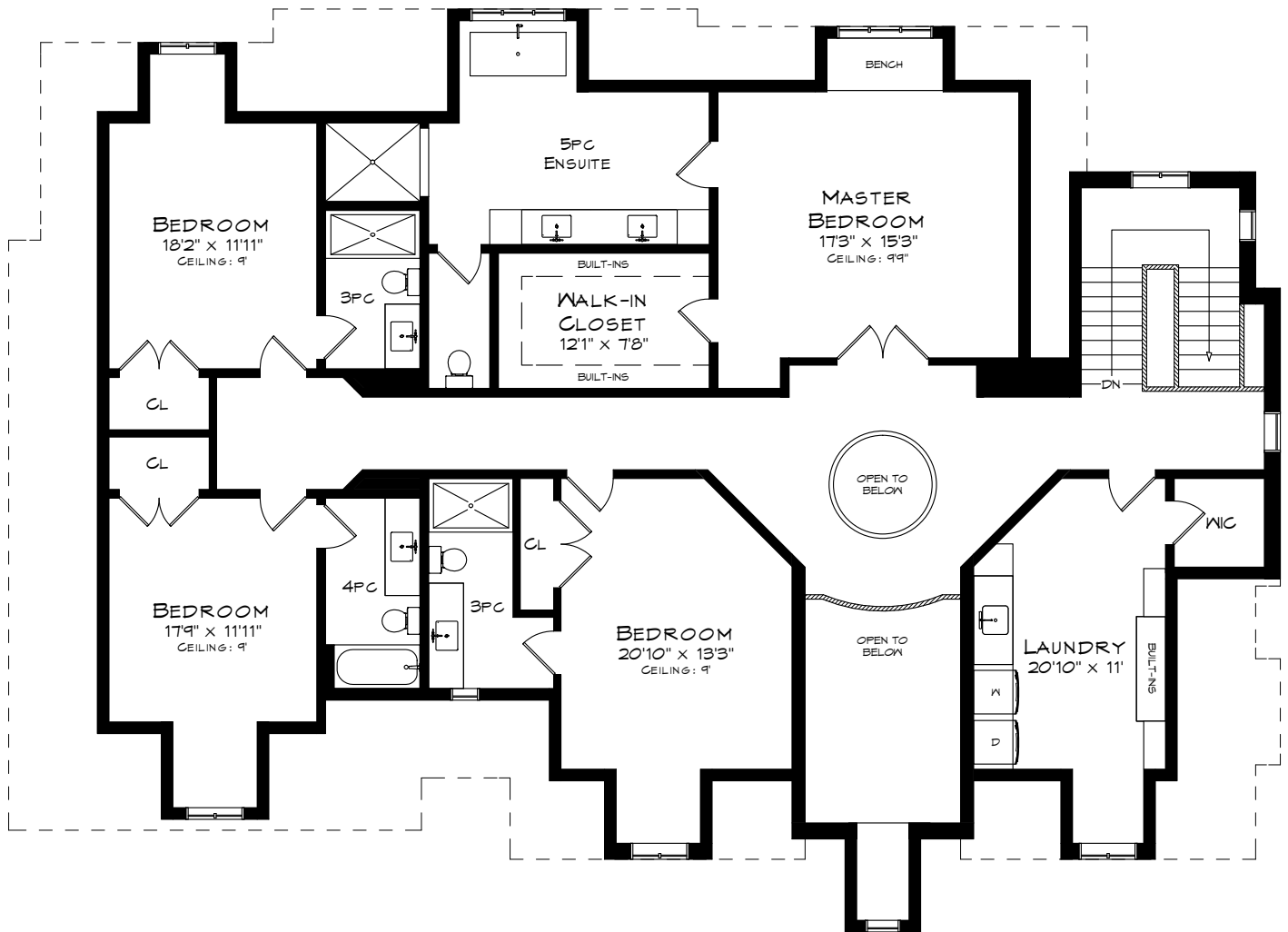
TOTAL SQUARE FOOTAGE
8,293 SQ.FT.



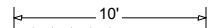
MAIN LEVEL
2,682 SQUARE FEET
+ 601 SF (GARAGE)

Measurements may not be 100% accurate
and should be used as a guideline only.
September - 2020

1507 BROADMOOR AVENUE

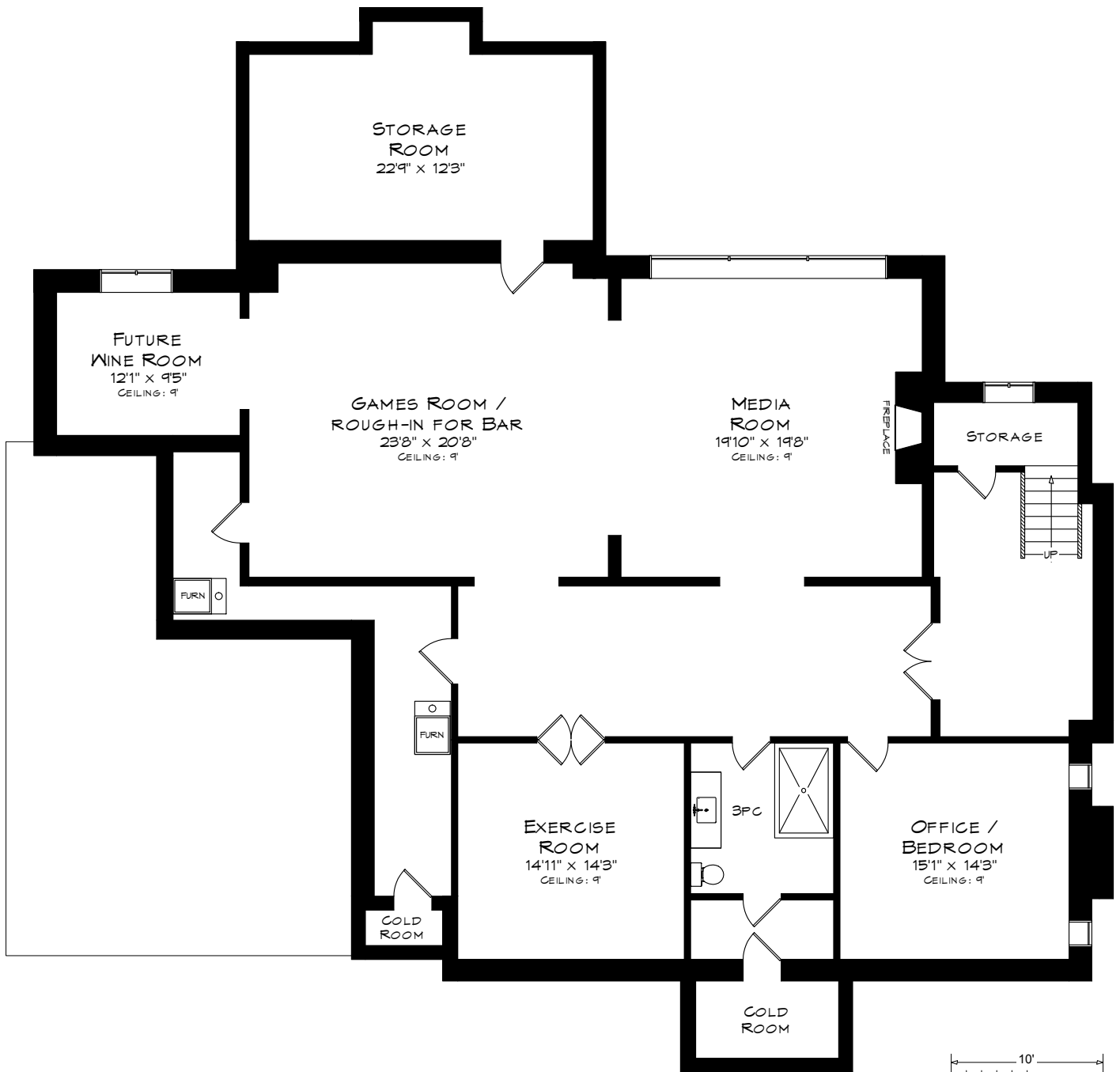


UPPER LEVEL
2,484 SQUARE FEET
+ 157 SF (OPEN TO BELOW)

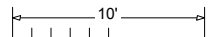


Measurements may not be 100% accurate
and should be used as a guideline only.
September - 2020

1507 BROADMOOR AVENUE



LOWER LEVEL
3,127 SQUARE FEET



Measurements may not be 100% accurate
and should be used as a guideline only.
September - 2020